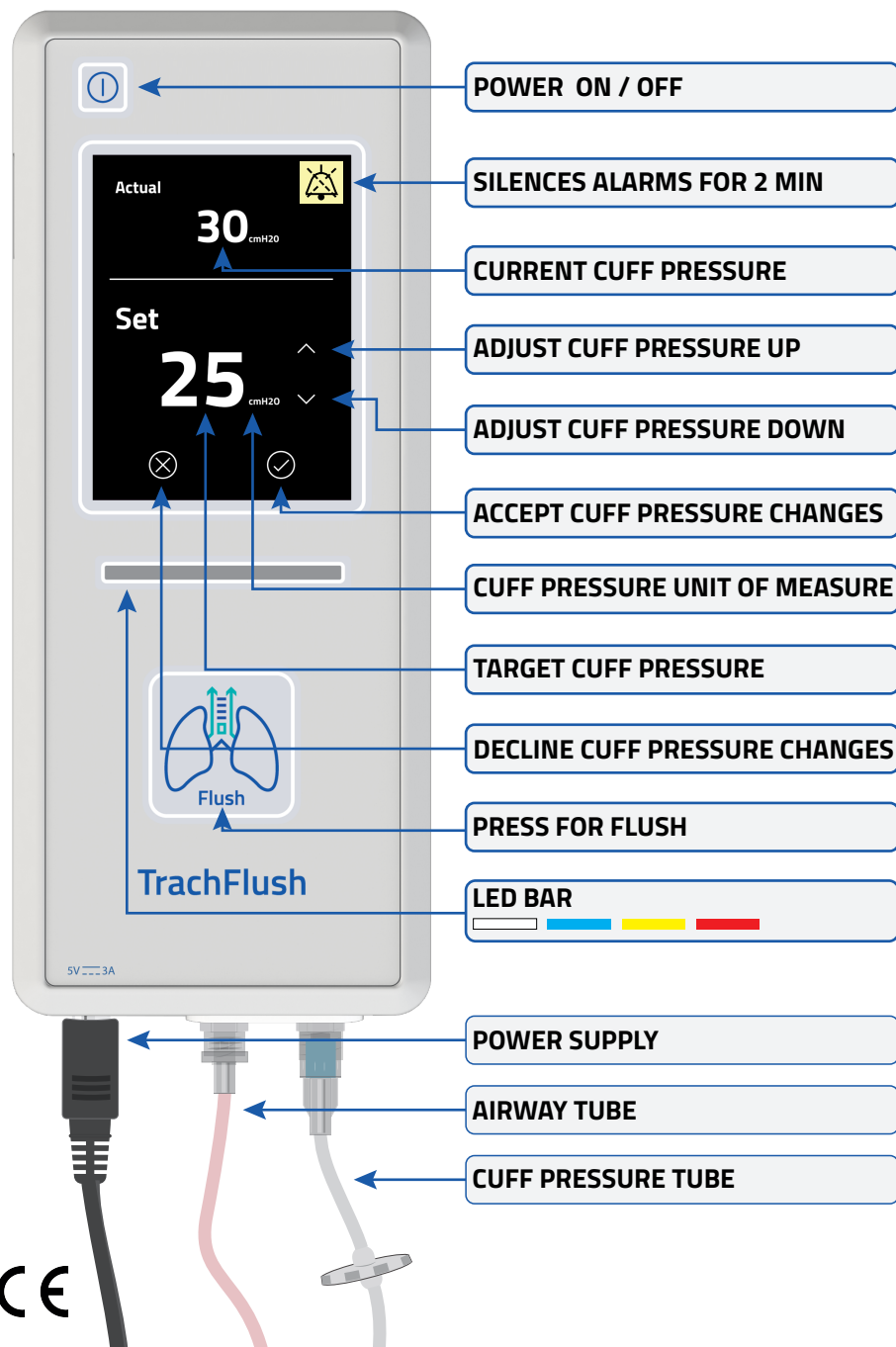


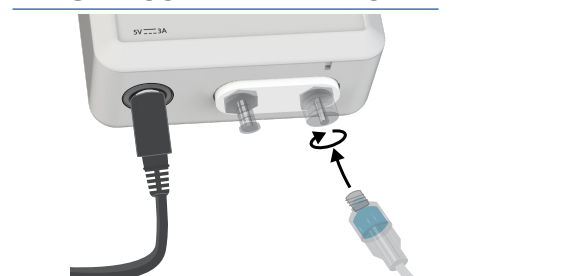
TrachFlush Quick Guide

FOR DETAILED INFORMATION DOWNLOAD **TRACHFLUSH INSTRUCTIONS FOR USE** FROM WWW.TRACHFLUSH.COM/DOWNLOADS

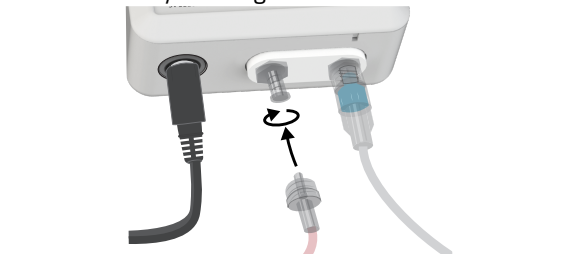
18 MUST NOT BE USED ON PATIENTS UNDER 18 YEARS OF AGE



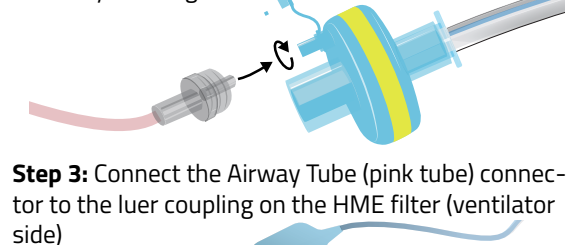
TRACHFLUSH PREPARATION



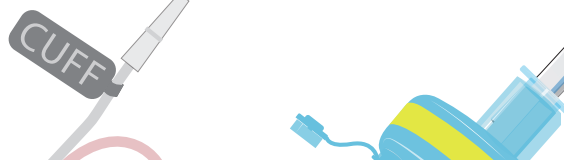
Step 1: Connect the Cuff Pressure Tube (transparent tube) connector to the cuff inlet socket of the TrachFlush device by twisting it on.



Step 2: Connect the Airway Tube (pink tube) connector to the airway inlet socket of the TrachFlush device by twisting it on.



Step 3: Connect the Airway Tube (pink tube) connector to the luer coupling on the HME filter (ventilator side)



Step 4: Connect Cuff Pressure Tube (transparent tube) connector (labelled "Cuff") to the ETT or TT cuff connector by pushing it in



Step 5: Press and hold the On/Off button for 3 sec to turn on TrachFlush

ALARMS

	CUFF PRESSURE $\geq 70\text{CMH}_2\text{O}$
	CUFF PRESSURE $> 50\text{CMH}_2\text{O}$
	CUFF PRESSURE $< 5\text{CMH}_2\text{O}$
	CUFF LEAKAGE
	POWER IS DISCONNECTED
	FLUSH OR CUFF ADJUSTMENT IN PROGRESS
	CUFF PRESSURE TUBE NOT CONNECTED
	AIRWAY TUBE NOT CONNECTED

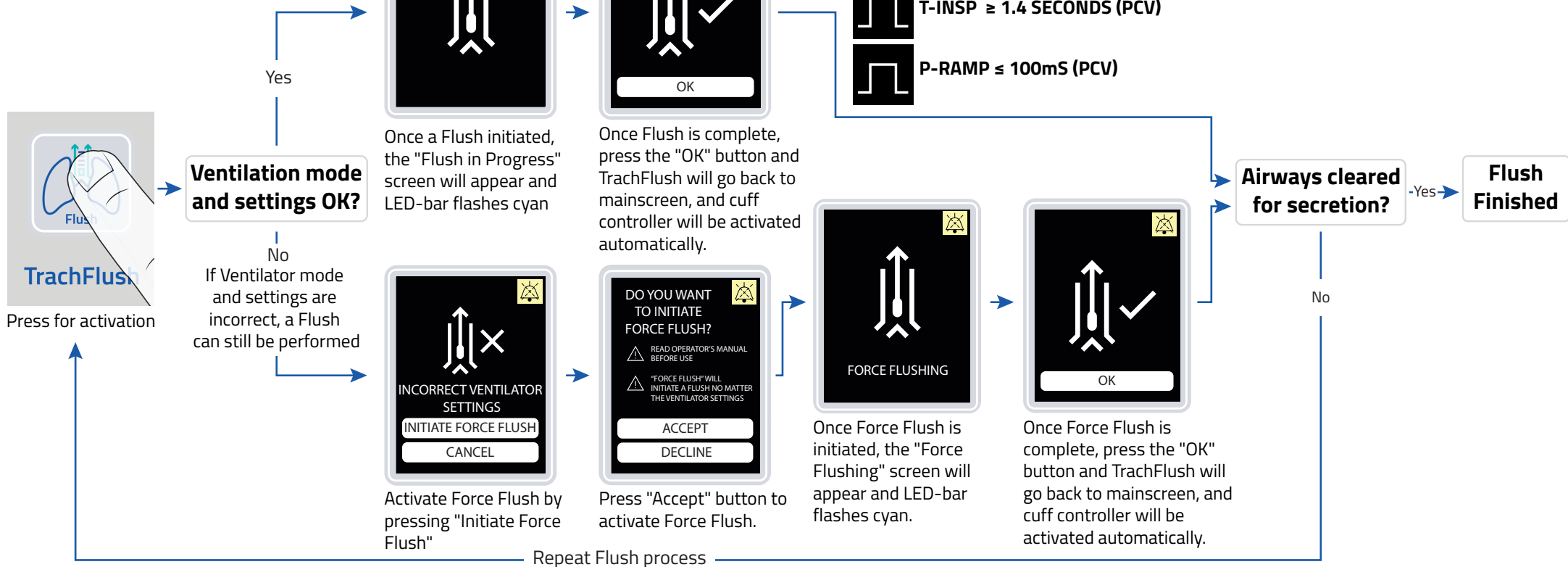
INFORMATION SIGNALS

	FLUSH COMPLETE
	FLUSH IN PROGRESS
	CHECKING VENTILATOR & CUFF SETTINGS
	SERVICE OF THE DEVICE IS REQUIRED

TrachFlush Quick Guide

FOR DETAILED INFORMATION DOWNLOAD **TRACHFLUSH INSTRUCTIONS FOR USE**
FROM WWW.TRACHFLUSH.COM/DOWNLOADS

FLUSH CONTROL



CUFF CONTROL

